

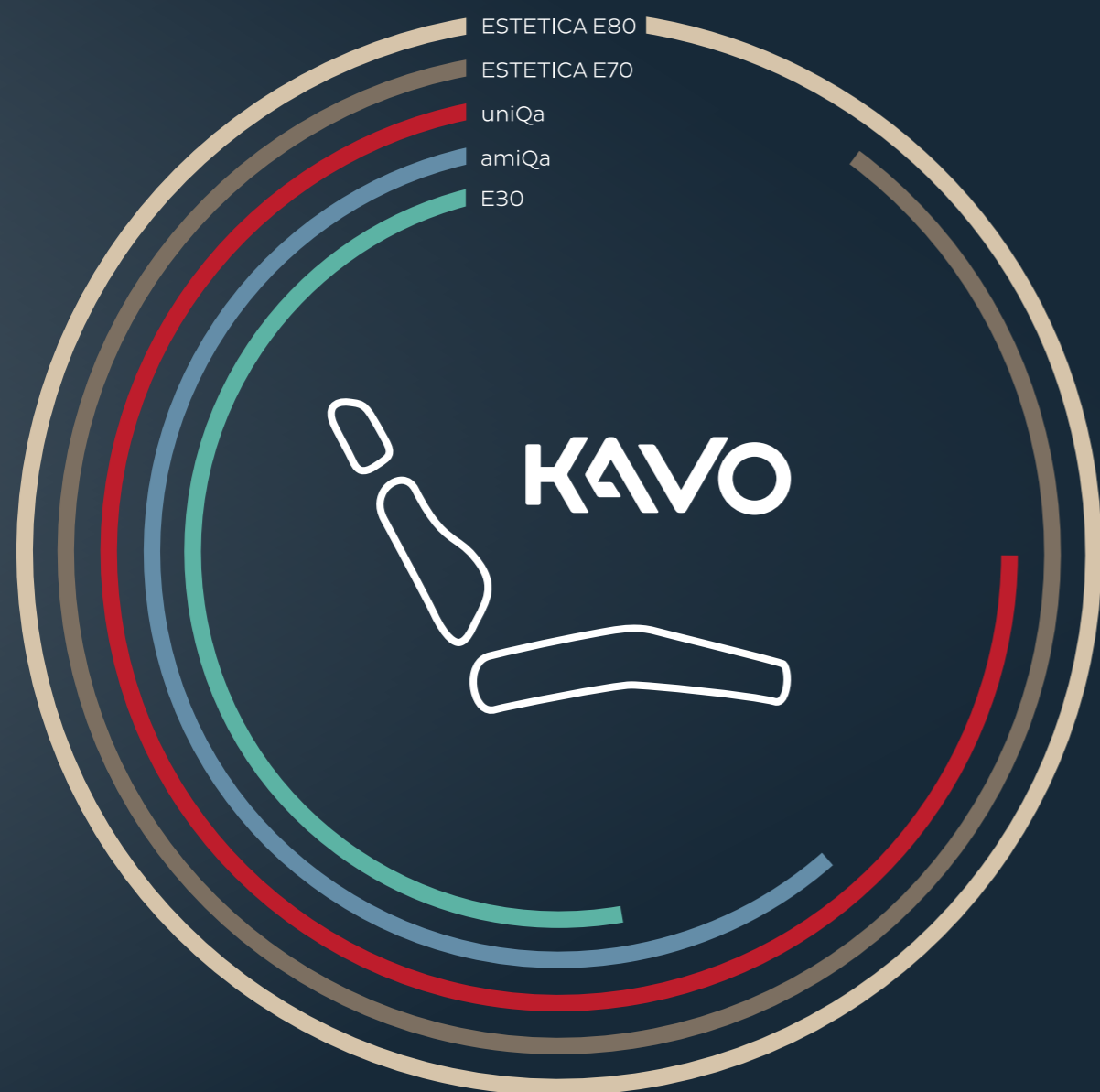
KAVO

AMIQA

Simply essential.



KaVo – The dental unit.
An investment in your health.



KaVo dental units are your dependable practice partner. KaVo dental units are unrivalled when it comes to promoting a natural posture with exceptional freedom of movement and short reach distances. They provide the ideal ergonomic solution for every conceivable treatment situation. We aim to combine the highest standards of hygiene with an aesthetic design to create a feel-good experience for users and patients alike. This perfectly harmonised package for the dental workplace includes a long service life and total reliability – Made in Germany.



ERGONOMICS

The ultimate in comfort for dentists and patients alike. The wellbeing and long-term health of your practice team is our top priority.



USER EXPERIENCE

Ingenious functionality meets smart customisation – a winning combination for efficient, successful dental practices.



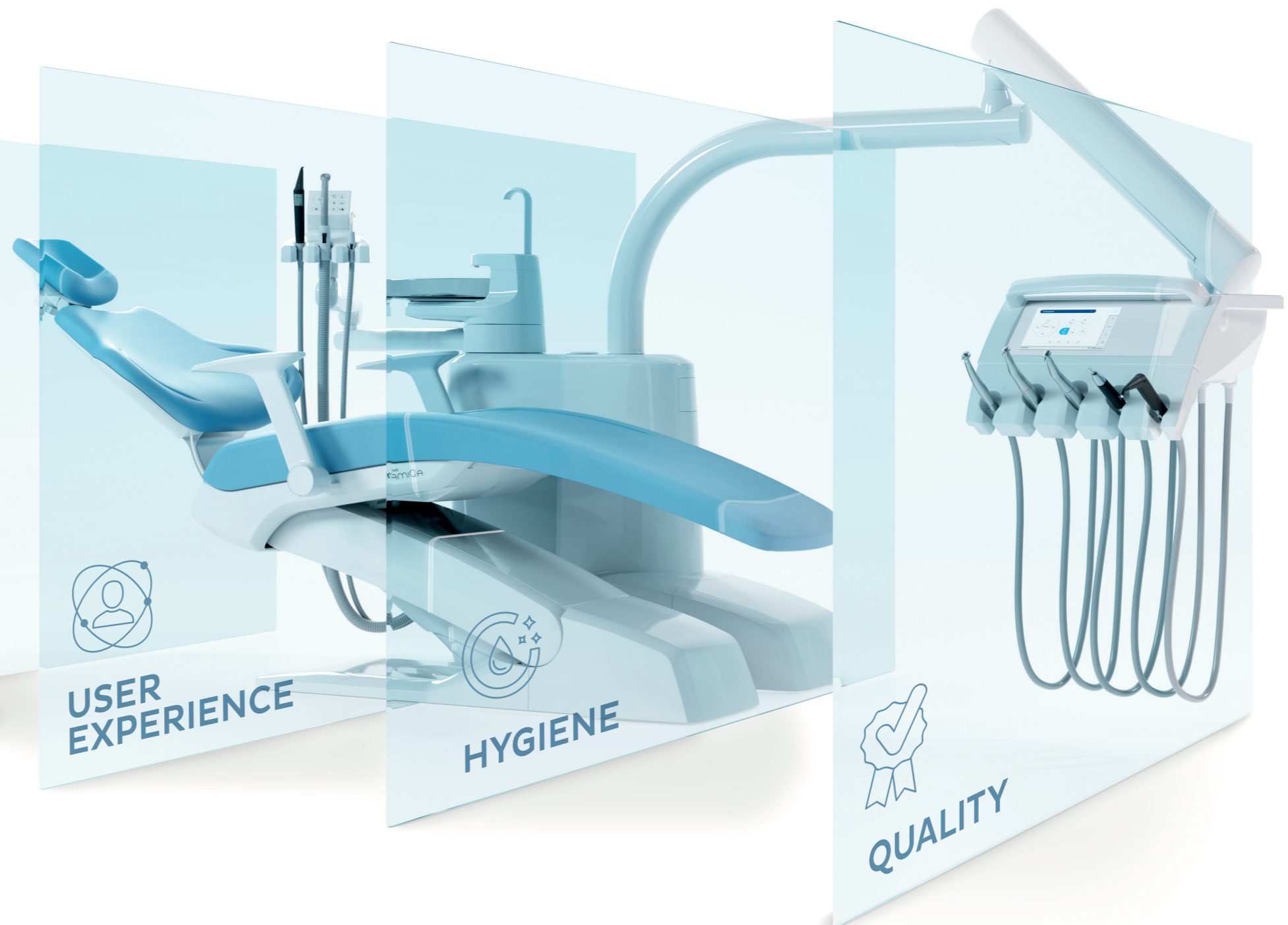
HYGIENE

Greater safety in every process – discover what comprehensive hygiene looks like with KaVo. Experience our fully automatic processes and smart, intuitive hygiene solutions for yourself.



QUALITY

Proven reliability because it's Made in Germany – KaVo has been offering the ultimate in quality for over 100 years. We use only high-quality, robust components and check all products for strict compliance with the most exacting international and internal quality standards. For added durability, stability and reliability.



The best choice – in every position

- Optimal legroom and a slim backrest and headrest facilitate access to the patient
- Head-to-toe comfort for patients and users
- A relaxing atmosphere: offset lighting and SPAlight
- Flexible adjustment thanks to a wide height adjustment range and high load capacity
- Lightweight, multifunctional and ideal for relaxed working: the ergonomic KaVo foot control
- See more with the new KaVo Lumina treatment light

Cutting-edge technology, intuitive handling and maximum efficiency for a premium practice experience

- Responsive, intuitive, quick and easy to use: high-resolution 7" touch display
- Efficient working: rapid access to all functions optimises your daily work
- Central control: quick and easy operation of patient chair, hygiene and treatment light functions for dentists and assistants
- Straightforward patient communication at the unit for trust and transparency

A feel-good experience before, during and after treatment

- Maximum treatment safety and reliability: KaVo DVGW water block – the undisputed pioneer
- Fully automated hygiene centre handles water preparation and processes
- Expert guidance with easy step-by-step instructions
- Unique suction germ reduction with gel ensures impressive performance for suction hoses

Designed, developed and manufactured in Germany

- Extremely sturdy: solid base formed of 143 kg metal
- High-quality plastics: certified for exacting requirements in everyday practice
- Low-maintenance and easy to service: cutting-edge technology meets tried-and-tested electronic components
- Reliable even under heavy loads: tested for a service life of over 10 years and at loads of 660 kg
- Rapid professional assistance: expert service in person and via the hotline



Easy. Precise. Excellent.
Because real values are what counts.

The KaVo amiQa embodies the key attributes of friendship, not least in its name. True friends never let us down; they make us feel safe and always put a smile on our faces. So, with the amiQa, the essence of the KaVo DNA has been distilled into a streamlined concept: top quality, simple yet ingenious hygiene processes, sophisticated ergonomics and fresh design. From basic features to specialist equipment, the amiQa delights its users with its external and internal qualities.

Something you can rely on: the KaVo amiQa is your steadfast companion – ideally for a lifetime.

KaVo amiQa – the highlights:



The design – dynamic, modern and compact

1. Stylish look with ultra-sporty design
2. Slim unit body with clean lines
3. Compact assistant element with three instrument holders; also available in a right/left-swivelling model for conversion into a dental unit for both right- and left-handed users
4. 14 upholstery colours that are in sync with current interior trends
5. Optional lighting element for offset light and a relaxing spa vibe

The dentist element – trust your intuition

6. Three compact table models for right- and left-handed users: TM-table, S-table and Cart
7. High-resolution 7" touch display: intuitive and tactile technology for rapid direct access to all key functions
8. Compact model with 4 instrument holders; versions with 5 or 6 holders also available
9. Wide range of equipment options from the basic to specialist: for all indications, including integrated endodontic and surgical functions
10. KaVo eSCALER: reliable, fully reusable ultrasonic scaler for efficient prophylaxis, 100% Made by KaVo
11. KaVo DIAGNOcam Vision Full HD: 3-in-1 intraoral camera for optimised caries diagnostics in full HD resolution
12. Easy and network-independent patient communication with the standalone KaVo CONNECTbase or the networked version with CONNECTlink

The KaVo ergonomic concept – healthy working in any treatment situation

13. Compact patient chair for superb ergonomic comfort: legroom, a lightweight and freely positionable foot control, and a slim backrest and headrest facilitate access to the patient
14. Soft upholstery for comfort and relaxation when lying down
15. Armrests swivel downwards, making it easier for the patient to get in and out of the chair without restricting their freedom of movement
16. Short reach distances and integrated equipment options

Hygiene functions – safety made easy

17. Intuitive hygiene guide and compact hygiene centre for automated rinsing and germ reduction of instrument hoses. Additional water tap for suction hoses

The standout accessory – cutting-edge technology for excellent visibility

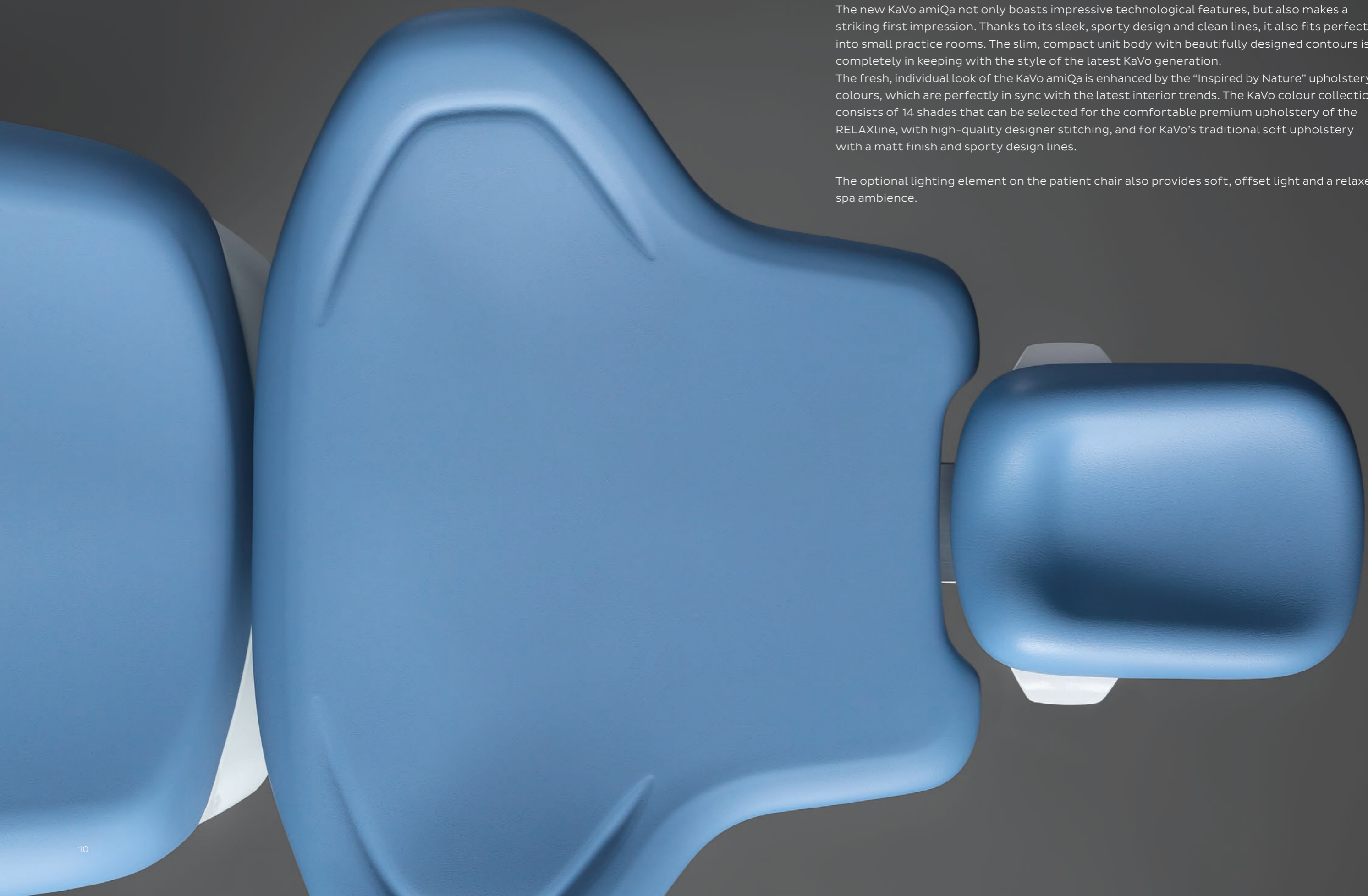
18. The new KaVo Lumina treatment light with UX Light Technology, SPALight, COMPOshape mode and superb ease of use

Ciao, bella!

The new KaVo amiQa not only boasts impressive technological features, but also makes a striking first impression. Thanks to its sleek, sporty design and clean lines, it also fits perfectly into small practice rooms. The slim, compact unit body with beautifully designed contours is completely in keeping with the style of the latest KaVo generation.

The fresh, individual look of the KaVo amiQa is enhanced by the "Inspired by Nature" upholstery colours, which are perfectly in sync with the latest interior trends. The KaVo colour collection consists of 14 shades that can be selected for the comfortable premium upholstery of the RELAXline, with high-quality designer stitching, and for KaVo's traditional soft upholstery with a matt finish and sporty design lines.

The optional lighting element on the patient chair also provides soft, offset light and a relaxed spa ambience.



UTTERLY BRILLIANT – THE NEW TOUCH- SCREEN GENERATION



The response speed and sharpness of the new generation of KaVo touchscreens delight users from the very first touch. The self-explanatory, intuitive user interface of the dentist element with its high-quality glass panel ensures smooth, speedy and relaxed workflows.

A friend for life

The principle of the KaVo amiQa is perfectly simple: you can rely on it to be there for you and do a great job in any treatment situation. A steadfast support, it adapts perfectly to your needs, with a range of equipment options for the dentist and assistant elements. It offers easily programmable custom settings for different users, including key assignment on the homescreen. And even if circumstances change, the KaVo amiQa remains true to you. Retrofitting allows for a range of adaptations – from five or six trays to the addition of endodontic and surgical functions. That's true friendship!



All set: saved parameters for up to five treatment types can be called up quickly and reliably for every instrument, and for up to six practitioners.

Impressively intuitive

The latest-generation touch display isn't just visually striking – its high-resolution screen, simple, intuitive operation and high response speed also make it your go-to everyday companion. It shows you all of the key information at a glance and allows you to access the functions quickly and easily.

Simply perfect!

TM-table



S-table



Cart



**Left- or right-handed?
Why not both?**

All three amiQa table models are suitable for right- and left-handed users. No matter which version you choose now, you can convert it later if required. Custom combinations are also possible. For instance, the S-table and Cart can be paired with an assistant element that can be swivelled right and left, making it easy to change sides at any time.



**Keep it smart and simple –
and aligned with your needs**

The practical 4 instrument holders of the dentist element are ideal for basic requirements or prophylaxis applications. The dentist element of the amiQa can also be upgraded to a configuration with 5 or even 6 instrument holders. You decide what you need in everyday practice.

**Good things come in threes:
choose your ideal model**

All three versions of the amiQa dentist element allow for short and ergonomic handling ranges. Depending on your preference, the TM-table, cart and S-table offer a range of advantages in everyday practice. The S-table, for example, has three ergonomic locking positions that optimally balance the weight of instrument hoses at a length of 50 cm, 70 cm or 90 cm.

In the cart version, the dentist element is not suspended above the patient, but mounted on castors next to the treatment chair.

The TM-table version boasts an especially generous storage surface that forms a useful bridge between the dentist and assistant.

KAVO INSTRUMENTS – FEEL THE DIFFERENCE.

Our instruments are based on the finest materials, developed exclusively for our products. These are paired with our unique product architecture – made from one piece of solid material – for extraordinary precision and durability. We set the standard for the dental instruments of today. This wealth of experience, borne of over a century of constant innovation, is reflected in the design and functionality of our current instruments. The result is optimum user performance through precise, fatigue-free working.



Products that meet your expectations

When it comes to your instruments, you want only the best. KaVo instruments cover all areas of application and provide the best possible visibility and access to the oral cavity – so you can always offer treatment of the highest quality and precision. In combination with the lightweight, ultra-compact and smooth-running INTRA LUX KL 703 LED micromotor, you can work efficiently and fatigue-free across the entire speed range from 100 to 40,000 rpm thanks to SMARTdrive.



Specialist technology for everyone



The new KaVo eSCALER

The new KaVo eSCALER is Made in Germany – Made by KaVo.

The KaVo eSCALER performs extremely precise and time-efficient tooth cleaning: the linear oscillation of the tip is highly effective, at up to 30,000 Hz. The precisely defined ultrasonic vibration, ergonomically shaped dental handpiece, daylight illumination and delicate tips, which allow users to access even hard-to-reach areas with ease, provide maximum treatment comfort for both the patient and the practitioner.



KaVo SONICflex – the all-round pro for top performance

The KaVo SONICflex is an all-round pro: it can handle almost any indication and provides comfortable, enamel-friendly treatment. With gently pulsating sonic vibration at approx. 6,000 Hz and a choice of over 50 tips, this scaler is popular with patients and practitioners alike and is perfect for all areas of application, including prophylaxis, endodontics, periodontics, minimally invasive caries treatment and preparation.

Tip-top endodontics

With 3 different file control modes, the integrated endodontic functions save you from having to purchase an expensive endodontic device.

The integrated file database with almost 200 preset files allows you to call up, set and save key parameters such as transmission ratio and torque values via the dentist element – and add new files at any time.



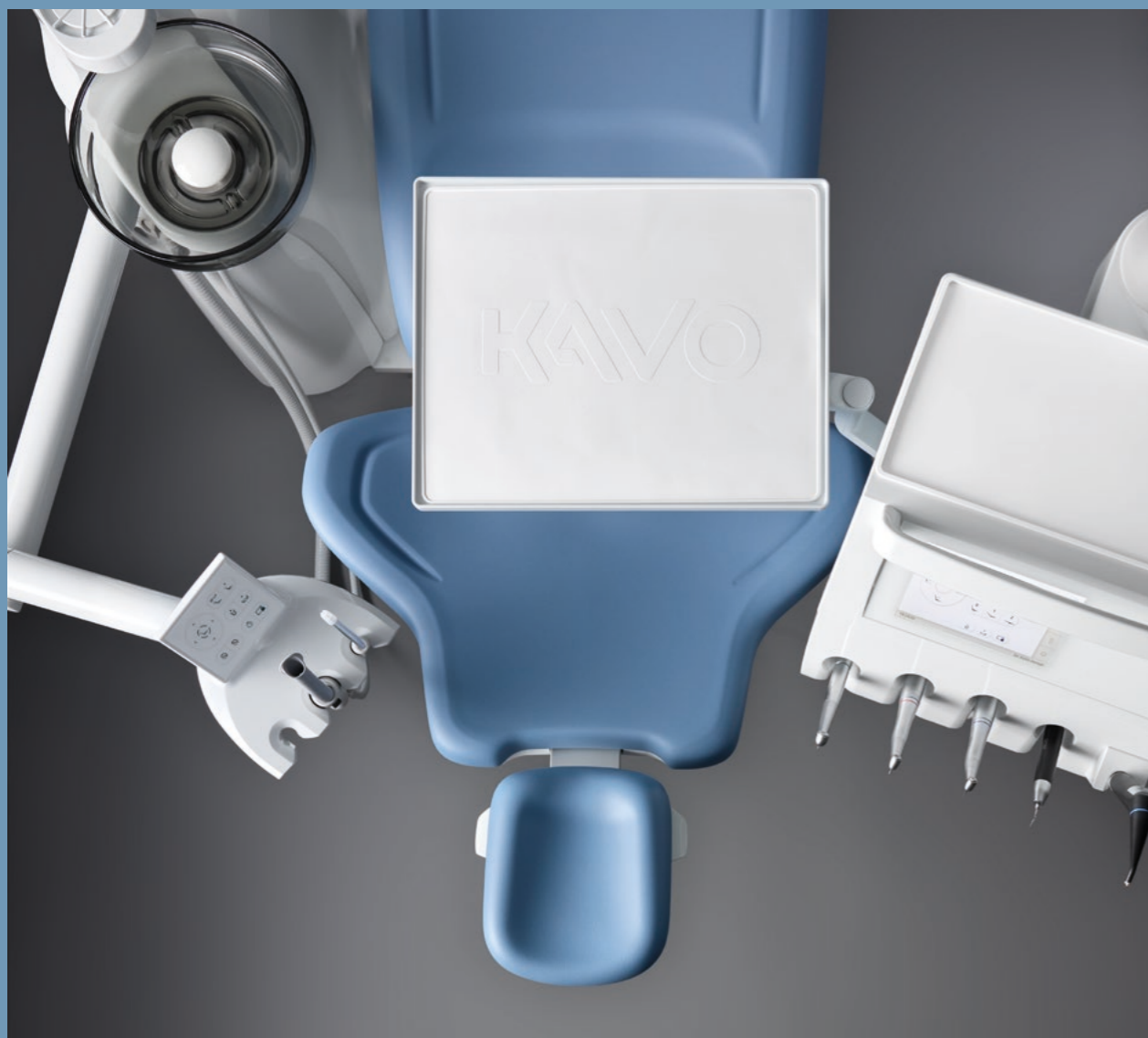
The smart surgery option

Make even the most demanding procedures as comfortable as possible by equipping your KaVo amiQa with the KaVo INTRA LUX S600 LED. This is one of the lightest and smallest surgical motors.

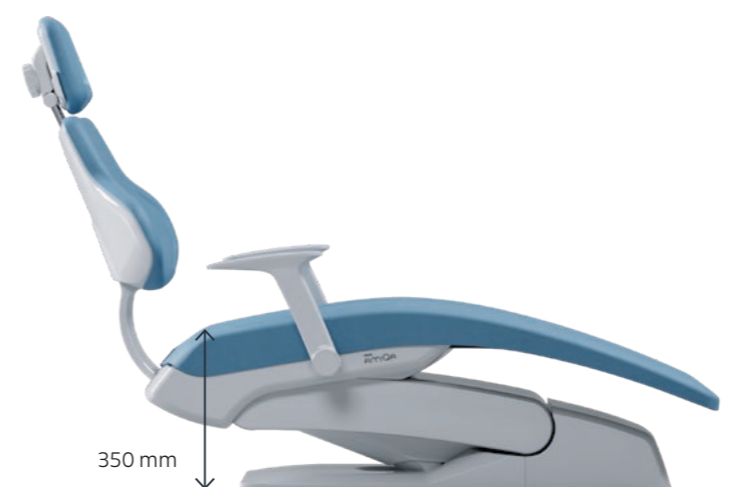
When used in combination with KaVo surgical instruments and the integrated saline pump, you have all the functions of a modern surgical unit at your disposal.



BECAUSE HEALTH IS OUR MOST VALUABLE ASSET



Thanks to the sophisticated premium ergonomics concept, investing in a KaVo dental unit is also an investment in the health of your practice team. The overall ergonomics of the KaVo amiQa are designed to make treatment procedures as stress-free as possible, promoting a healthy, back-friendly posture with intuitive processes. And your patients feel the benefit too, lying in a comfortable, relaxed position on the KaVo amiQa treatment chair.



The KaVo amiQa guarantees the full range of dental unit functions even when the treatment chair is occupied by a very heavy patient.



True friends...

... meet you at your level

The height of the patient chair can be set at between 350 mm and 830 mm, ensuring optimal ergonomic comfort, regardless of whether you prefer to perform treatment work sitting or standing.

... give you freedom

The KaVo amiQa patient chair offers plenty of space and legroom. You can also position the foot control wherever you find it most comfortable, as the slim design of the patient chair and the footplate provide plenty of space. This allows you to work in a relaxed and back-friendly posture, while positioned close enough to the patient.

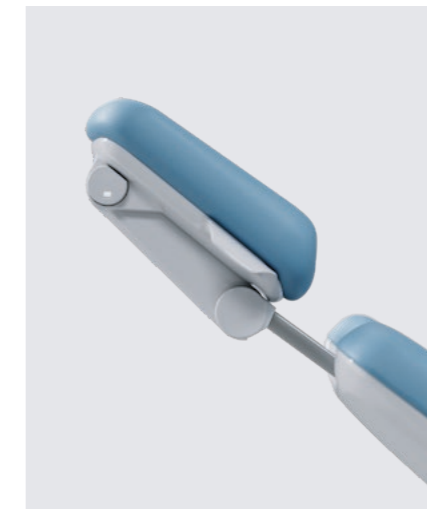
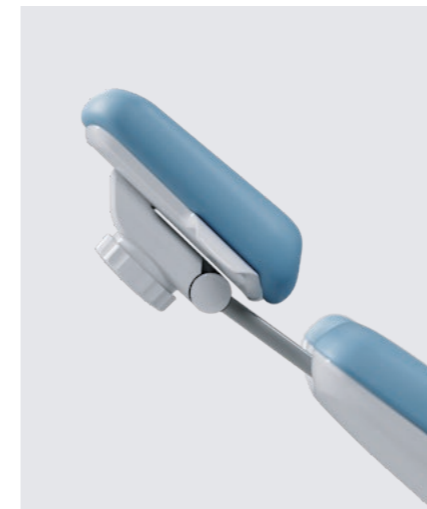


The best choice – in every position

Optimal positioning is not only comfortable for the patient, but also crucial for an ergonomic working position. Depending on the patient's size and the indication, the versatile reversible cushion and the continuously adjustable double-jointed headrest allow your patients to lie comfortably, while giving you a good view and accessibility to your work area. The KaVo RELAXline and comfort head cushion offer added comfort. The premium upholstery contains memory foam that moulds perfectly to the patient's body, offering superb comfort while lying down – even during long treatments. Your patients lie completely relaxed and you have optimal access.



Progress backrest: optimal working posture and access to the patient's mouth. Wide elbow pad for extra comfort.



Straightforward and convenient: easy-to-operate double-jointed headrest with rotary knob or mechanical clamp and swivelling head cushion.

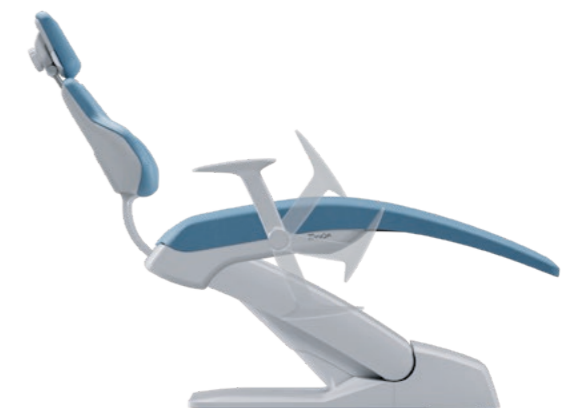
Perfectly positioned

The KaVo amiQa offers an ergonomically comfortable lying position for your patients. Thanks to the integrated Trendelenburg motion, the footrest tilts and raises automatically to match the inclination of the backrest. This combined movement prevents the patient's back from being compressed or stretched as the backrest is being readjusted. The raised leg position also supports the patient's circulation.



Easy to get in and out

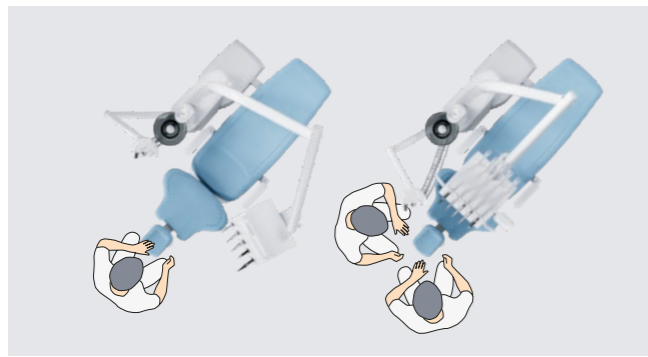
The armrests of the KaVo amiQa swivel down, making it easy to get in and out. You offer your patients support and safety without having to compromise on freedom of movement.



A true amiQa: dependable in every situation

Every move a masterpiece

During treatment, you need to perform every move just right. Reaching distances should be short and intuitive, regardless of whether you're performing the treatment alone or together with an assistant. The amiQa dentist elements, tray support and assistant element have a large range of



motion and can be positioned as required at any time. In the swing-arm version, the maximum 90 cm extension of the instrument hoses and the low table height of 45 cm provide additional space.



Support for assistants

The compact assistant element of the KaVo amiQa is equipped with a capacitive touch panel and a clearly configured user interface. Central patient chair, rinsing and lighting functions can be accessed quickly and directly. The flexible height adjustment and the large swivel range provide added ergonomics.



Got too much on your hands? Not with the KaVo foot control!

You can control all functions and integrated units easily and ergonomically with the foot control – including patient communication. Besides easy operation, it has the additional advantage of reducing the risk of cross-infection. Positioning is even more flexible with the cordless model.



Efficient workflows require short reaching distances

At the centre of the action

The KaVo Centro system sits at the heart of the dental unit. This smart system arranges all devices sensibly and ergonomically in one place. Every device is quick and easy to reach. Want to convert or upgrade your unit with new technologies at a later date? The Centro system makes it possible. Devices and components can be exchanged quickly and easily using the many adapters. With its short reach, your new amiQa supports optimised workflows – freeing you up to focus on what's important.



Superb flexibility – the KaVo Centro system



Intraoral X-rays on the spot

The KaVo ProXam iX can be easily installed on the light mounting rod using an adapter. This allows you to create X-ray images adjusted to the radiological indication on the dental unit itself – quickly, precisely and easily.



CLEANLINESS MADE SIMPLE – HYGIENE WITH THE KAVO AMIQA



The optimal hygiene process is simple, effortless and absolutely safe with the KaVo amiQa. Key components can be easily removed for germ reduction, the surfaces are easy to clean and rinsing of the instrument hoses is automated.

Safe hygiene made easy

A hygiene centre is integrated into the unit body of the KaVo amiQa for reliable cleaning and germ reduction of the instrument hoses. The instrument hoses are placed here for easy automatic rinsing. The hygiene centre also includes taps for manually rinsing the suction hoses with clear water. It is removable and thermodisinfectable.

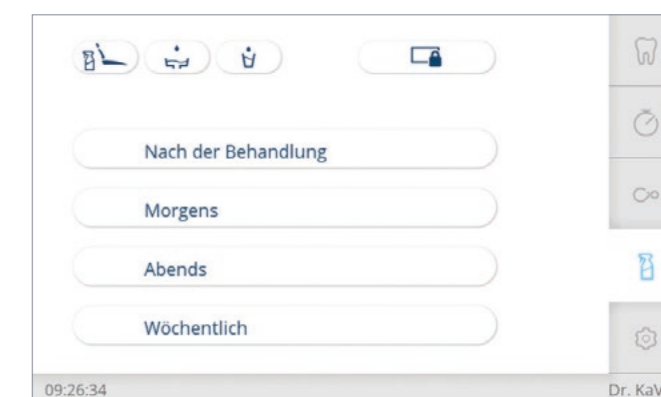
Bring on the water

The automated HYDROclean program cleans the drainage and separation systems effortlessly and is automatically combined with the instrument rinsing programs. As such, the amiQa makes your suction system more durable.



Automatic rinsing program

The pre-programmed cleaning protocols provide thorough assistance with running your KaVo amiQa – in accordance with RKI specifications. The hygiene guide takes you through preparing the unit step by step – whether after treatment, in the morning, in the evening or on a weekly basis. The programs then take care of rinsing and cleaning the instrument hoses by themselves.





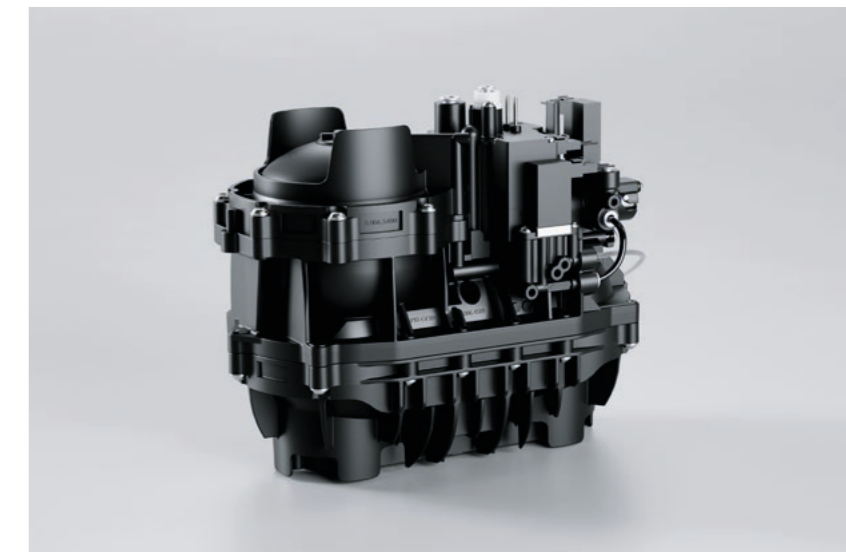
Optimal protection against contamination

The KaVo amiQa also makes protecting against contamination a breeze. Continuous germ reduction with KaVo OXYGENAL 6 ensures that no microorganisms can spread during normal practice operations. With the intensive germ reduction program (“Weekly” cleaning

program), you can protect your patients against microorganisms that can form during downtimes such as weekends or holidays, and also ensure that the cooling and rinsing fluids are of impeccable quality.

Safety, hygiene and flexibility – no exceptions, no compromises. With DVGW water block.

KaVo is setting new standards for the centrepiece of the dental unit with its next-generation water technology. The DVGW water block supplies spray and rinsing water for the instruments and the patient, and automatically dispenses the correct concentration of KaVo OXYGENAL 6. The cascade design of the water block, prevents water from the dental unit from flowing back into the drinking water system. This maintains the quality of your water supply while consistently meeting the exacting DVGW standards. The cascade path is also cleaned by flooding the collecting basin with KaVo OXYGENAL 6 concentrate. This enables the highest levels of hygiene and safety for your patients.

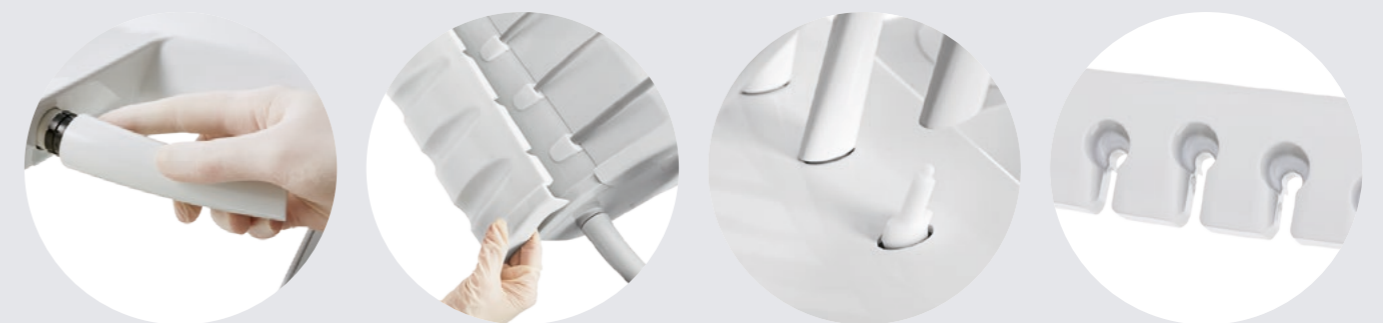


Protected water supply system

KaVo instruments and motors have an anti-reflux system that prevents contaminated spray water from being sucked into the dental unit. This protects the water supply system.



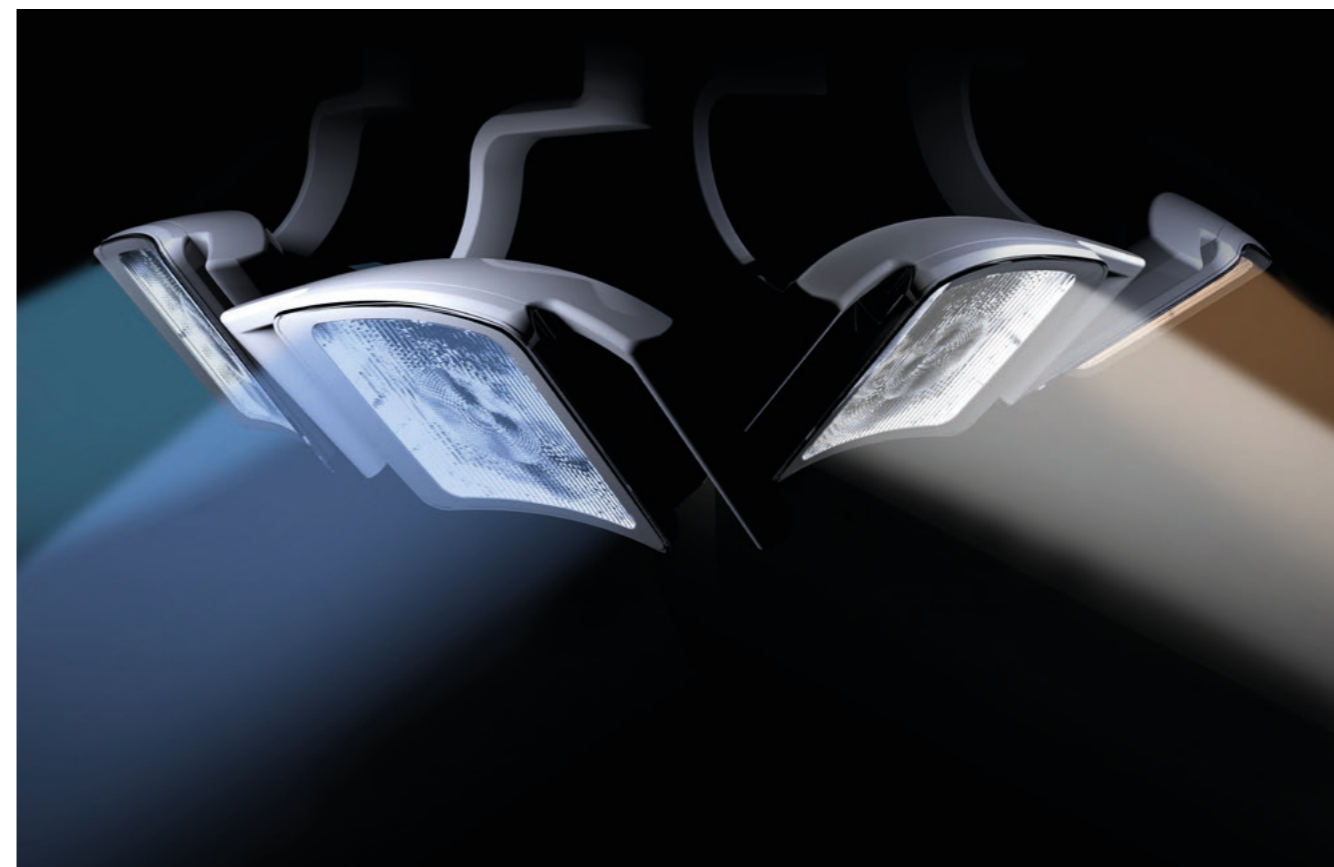
Time-saving: The ready-to-use KaVo DEKASEPTOL Gel can be applied straight into the suction hoses and systems. The special advantage of this is that the gel adheres to the critical points instead of just being rinsed through.



Handles, instrument holders, spittoon bowls, swing arms and silicone mats are easy to remove and disinfect. The upper and lower sections of the housing are completely closed so that no dirt can get into your dental unit. The hygienic handle allows the suction filters to be changed easily and safely.

KaVo Lumina with UX Light Technology. Enjoy the light side of dentistry.

The KaVo Lumina is setting new lighting standards in dental practices. A truly stunning piece of equipment, it takes lighting technology to a whole new level, boasts a variety of smart features and sets the gold standard in terms of user experience. The innovative UX Light technology enables perfect illumination of all levels right up to the molar area – without annoying reflections on the anterior teeth. Combined with the optimised light field, this is easy on the eyes and facilitates concentrated work. With its precise colour rendering, the natural light spectrum offers 'Made by KaVo' quality, enhancing the day-to-day work of technology enthusiasts and design aficionados alike.



Smooth movement redefined

The combination of balanced structure and comfortable handles, inspired by Japanese chefs' knives, perfects the smooth movement and positioning of the KaVo Lumina.



COMPOshape mode

The colour spectrum of the new COMPOshape mode with its reduced proportion of blue supports aesthetic layering. So thanks to improved colour and structure reproduction, contrasts are visible without premature hardening of the composite.



UX Light Technology

The Lumina's new UX Light Technology is created by combining an innovative single-optical system with a unique collimator. It generates constant, pulse-free light of the highest quality. The natural colour spectrum created by the UX Light Technology eliminates the need to adjust the colour temperature and enables optimised illumination of the molars without annoying reflections on the anterior teeth. It also forms a new, ergonomic light field.



SPAlight mode

The SPAlight provides a play of colours consisting of shades of blue and green that have a proven calming effect, according to cutting-edge colour psychology. This means it can be used to create a relaxing atmosphere and a spa-like vibe before and between treatments.

Your go-to for the right accessories



Give your KaVo amiQa an extra-personal touch with the right accessories! Make the most of the KaVo mix & match concept to enhance your amiQa to suit your taste. KaVo offers an array of options for integrating efficient and convenient workflows. The touch display and foot control make it easy to access all the functions and parameters of your integrated special devices. Make the amiQa your reliable partner in everyday practice, whether for prophylaxis, orthodontics, surgery or endodontics.

KaVo MAIA LED

The KaVo MAIA LED offers modern LED lighting technology at a superb price.

- Up to 35,000 lux custom-adjustable light intensity
- Uniform illumination at almost daylight quality (5,000 K) for lifelike colours and textures
- Constant light field regardless of positioning thanks to indirect light via reflectors
- Removable, sterilisable handles for safe and easy hygiene



Perfectly poised.

As a dentist, maintaining an ergonomically healthy and comfortable posture in every treatment situation is difficult but crucial. And nothing affects your posture more than the operator stool you sit on every day. The KaVo PHYSIO Evo and Evo F are precisely tailored to the needs and workflows of dentists and their assistants.



Ergonomic comfort and convenience down to the finest detail

With separate adjustment functions, the seat and backrest can be adjusted to your anatomical requirements and your personal treatment style. The back and seat upholstery of the KaVo PHYSIO Evo are ergonomically moulded. The centred elevation in the seat upholstery provides a stable sitting position and prevents slipping even during quick, short rolling movements. The rounded thigh support gives you plenty of freedom of movement. The spring-assisted backrest provides constant support for your back muscles, especially in the lumbar region, thus protecting them over the long term.

An outstanding concept

The KaVo PHYSIO Evo treatment chair has been awarded the seal of approval by the "Healthy Back Campaign" (Aktion gesunder Rücken, AGR). An independent, multidisciplinary committee of experts issues this award based on strict test criteria for ergonomics and health.



PICTURE IT: OPTIMAL PATIENT COMMUNICATION.



Explain required treatment measures to your patients clearly and in detail thanks to high-resolution diagnostic images and pictures with brilliant colour reproduction.



DIAGNOcam Vision Full HD Innovation at its best.

Imagine there was a camera that could provide you with three clinically relevant images for caries diagnosis – strikingly sharp and in less than a second. Well, now it's possible: with the DIAGNOcam Vision Full HD you can choose whether you want to take an intraoral, transillumination or fluorescence image – or prefer to combine two or three shooting modes. The HD resolution of 1920 pixels x 1080 pixels means that all images are displayed in brilliant sharpness. The low weight and ideal balance of the camera enable ergonomic handling and fatigue-free working.

KaVo ProXam iCam – A small camera with a big impact

Use perfect images with a high depth of field and excellent colour reproduction to explain the dental situation to your patients. The easy-to-use KaVo ProXam iCam always provides you with the optimal image. The camera enables a sharp picture to be displayed at an image distance of just 9–35 mm and also has a macro mode. Image capture can be triggered by hand or with the foot control.



Show your patients

The 22" KaVo screen offers high-resolution image quality in full HD, impressive contrast values and brilliant colour reproduction. With two digital inputs, it is optimally coordinated with all the functions of imaging devices such as cameras or microscopes. For maximum hygiene, the screen has a protective glass panel, small gaps on the housing and can be adjusted with just one hand. The choice couldn't be clearer!



The new mainstay of your patient communication – integrated, simple and efficient.

KaVo CONNECTbase opens up an easy new workflow in patient communication. You can use CONNECTbase to explain your patients' dental situation to them directly on the KaVo amiQa, without installing any additional software. Simply connect your camera and get started right away. The images are displayed on the screen of the dental unit and can be compared with previously saved images.



Plug-and-play principle – streamlined workflows made easy

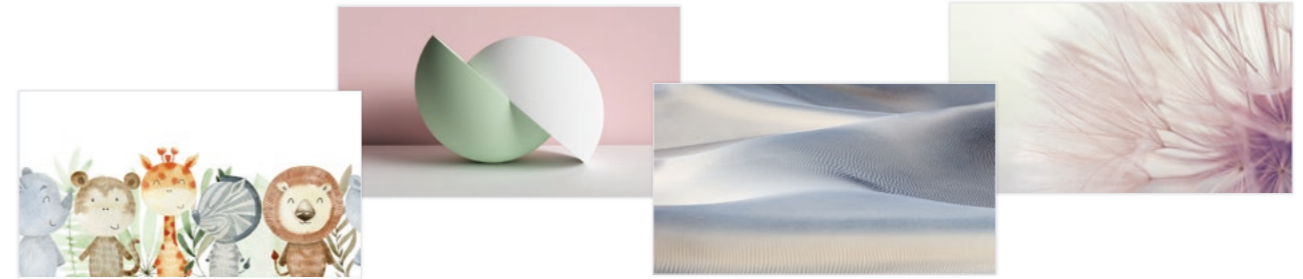
By using cameras directly with the KaVo dental unit, you can access your camera images in no time at all and then export them via USB.

It's just as easy to operate using the touchscreen display or the foot control on your dental unit, so you won't need to leave your workstation during treatment or interrupt your workflow unnecessarily.

Want to access additional inputs? No problem. Different HDMI sources can be displayed on the screen of your dental unit simply by switching over on the dentist element.

Make your treatments an experience

Alleviate boredom during waiting times and, if necessary, create a welcome distraction for your patients through visual experiences on the KaVo amiQa. The great selection of media, including a customisable welcome screen and various screen savers with a large selection of photos or slideshows, will delight patients of all ages. At the same time, you can use your screen to advertise topics related to your practice or communicate relevant information. The KaVo amiQa allows you to craft a bespoke experience.



Choose from a wide variety of themes for your screen background to match the design of your practice.



Link up your practice management software with ease.

CONNECTlink software connects your practice management software to the KaVo dental unit, enabling quick and easy transfer of patient data and clinical images. This gives you direct access to all relevant data on the touchscreen display on the dentist element of your KaVo dental unit and allows you to add new clinical images with the KaVo cameras as usual. Thanks to CONNECTlink, these images are automatically transferred to the practice management software and assigned to the respective patient file.

The CONNECTlink software can be purchased as a separate module for your existing CONNECTbase patient communication system. To use the CONNECTlink software, you need CONNECTbase and the corresponding CONNECTlink licence on the respective KaVo dental unit.

Equipment options

Patient chair

- Soft upholstery ●
- RELAXline soft upholstery ○
- Backrest ○
- Progress (optimised) ●

Headrest

- Double-jointed with rotary knob ●
- Double-jointed with mechanical clamp ○
- Comfort head cushion ○

Armrest

- Left ○
- Right ○

Dentist element

	TM	S	C
Touch display	●	●	●
SMARTdrive	●	●	●
4 instrument holders ²	○	○	○
5 instrument holders	●	●	●
6 instrument holders	○	○	○
Turbine hose	○	○	○
INTRA LUX Motor KL 703 LED™	○	○	○
Integrated torque control (endo)	○	○	○
KaVo eSCALER/ultrasonic scaler	○	○	○
SONICflex™ sonic scaler	○	○	○
Triple function handpiece	x	x	x
Minilight 3F/G3F	x	x	x
Multifunction handpiece	○	○	○
Physiological saline solution	○	○	○
S600 LED surgical motor	○	○	○
Spray warming for instruments	○	○	○
USB interface	○	○	○
Pneumatic brakes for arm system	-	○	-
Tablet holder for two norm trays	○	○	-
Service table 1568 for two norm trays	-	-	○

Assistant element

- Capacitive touch panel ●
- 3 instrument holders ●
- Spray mist suction ●
- Saliva ejector ●
- Triple function handpiece ○

- Minilight 3F / G3F ○
- Satelec MiniLED polymerisation handpiece ○
- Tray holder for tablet holder ○
- Swivel- and height-adjustable ●
- Selective support kit ●
- Short arm x
- Right-/left-rotatable ○

Unit body

- Porcelain spittoon bowl x
- Glass spittoon bowl, smoky grey x
- Hygiene centre ●
- Constant germ reduction¹ ○
- Intensive germ reduction¹ ○
- HYDRoclean (suction rinsing system) ●
- Warm water boiler ○
- VACUstopp ●
- Wireless foot control ○

Supply system

- Compact water block ●
- DVGW water block ○
- DVGW water bottle ○
- Connection to external devices ○
- Vacuum control valve ○

Disposal system

- External wet suction system ●
- DÜRR amalgam separator ○
- DÜRR automatic separator ○

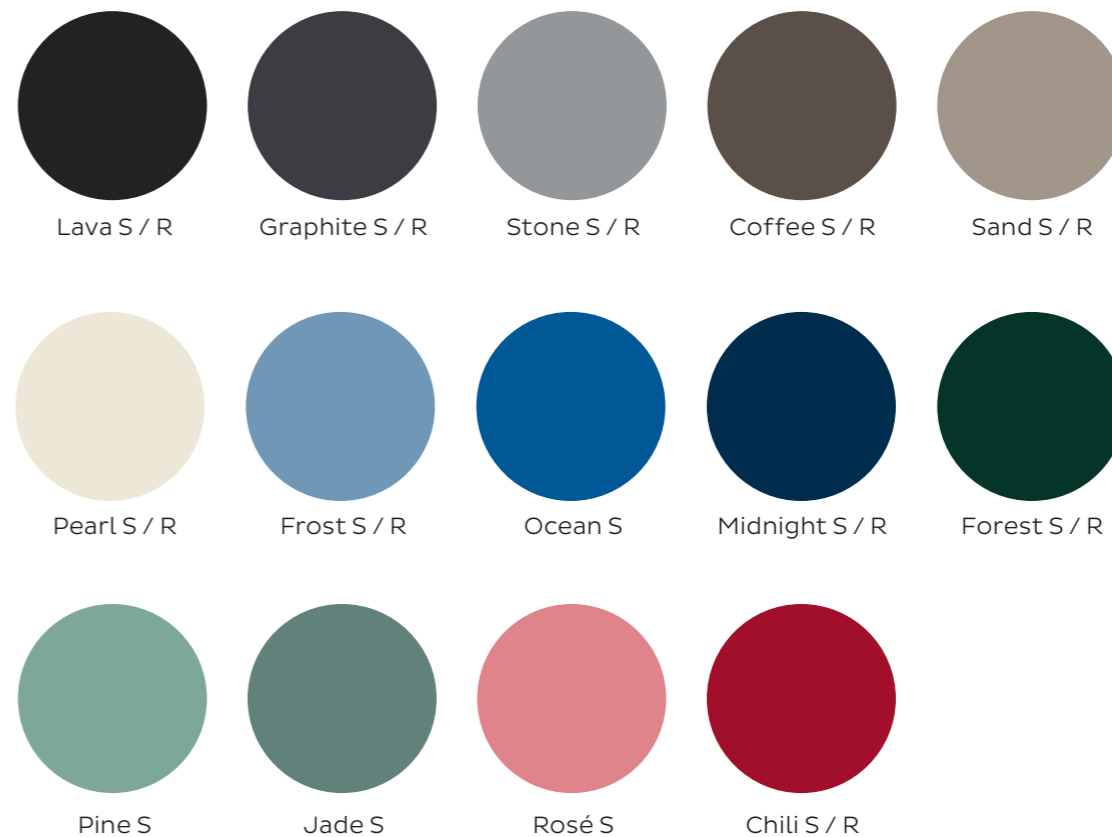
Treatment light

- KaVo Lumina ○
- MAIA LED ○
- Light mounting rod ○
- Adapter for light mounting rod (e.g. for KaVo ProXam iX) ○


Patient communication

- KaVo CONNECTbase ○
- CONEXIO ○
- KaVo Screen ○
- KaVo ProXam iCam ○
- KaVo DIAGNOcam Vision Full HD ○

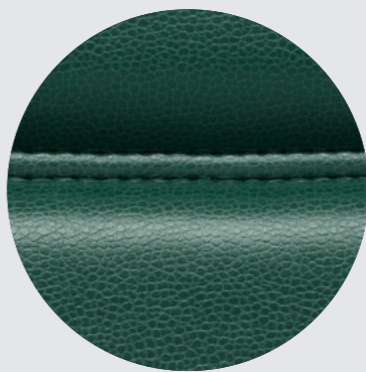
“Inspired by Nature” upholstery colours



Available as:
S – Standard
R – RELAXline



Standard
Traditional upholstery with matt upper.



RELAXline
Leather-like upper, memory foam with decorative seams.

Top-quality modern design: all KaVo upholstery is crafted by hand in Germany, with design studio quality. Both the RELAXline upholstery with its soft, leather-like surface and striking seams and the traditional upholstery with a matt finish are elegantly complemented by the “Inspired by Nature” colour collection. Whichever upholstery line you choose, the colour collection creates promising options for setting aesthetic accents with your dental unit, in line with the latest interior trends.

● Standard equipment | ○ Optional equipment | x Must be selected | - Not available

¹ Only in combination with DVGW water block and DVGW water bottle | ² For a reduced price

Dental Excellence in every area

What our brand represents

KaVo is a long-established, dependable manufacturer, and always will be. We and our products have stood for the highest quality and reliability for over 100 years, so our customers can concentrate on what's important.

KaVo is adept and uncompromising when it comes to combining essential requirements, ergonomics, the highest standards of hygiene and design to create the best overall package. Thanks to our perfect interplay of dynamism and expertise, we're always at the cutting edge.



KaVo Dental units –
an investment in your health



KaVo instruments –
feel the difference.



KaVo Imaging –
see more, plan better



Dental training –
effective learning

The products, equipment and services shown and described in this brochure are not available in every country. The information given here reflects the knowledge available at the time of printing. KaVo Dental GmbH accepts no liability for deviations in colour and form in the illustrations, or any errors or misprints, and reserves the right to make changes to the brochures at any time.

KaVo, ESTETICA, uniQa, amiQa, Primus and Lumina are registered trademarks of KaVo Dental GmbH.